



**WESGREEN  
INTERNATIONAL SCHOOL  
SHARJAH**

**UNIFORM GUIDE**



# INDEX

➤ Introduction	3
➤ Core Uniform (KG1 - G2)	4
➤ Core Uniform (G3 - G6)	5
➤ Core Uniform (G7 - G11)	6
➤ PE Uniform (All Grades)	7
➤ Winterwear Uniform (All Grades)	8
➤ Uniform Care	9
➤ Shopping & Customer Care	10
➤ Iron on Name Label	11

Dear Parent,

We would like to take this opportunity to welcome you to Threads. This guide has been put together to assist you on the following:

- Selecting the correct uniform for your child
- Identifying the suitable size
- Maintaining the uniform
- Ordering
- Retail locations relevant to your school
- Information on customer service

Whilst every effort is made to ensure that the experience of purchasing your child's uniform is that of a smooth nature, if you have any queries, concerns, or suggestions, we request you to kindly forward these to our Customer Service Team at [support@threadsme.com](mailto:support@threadsme.com)

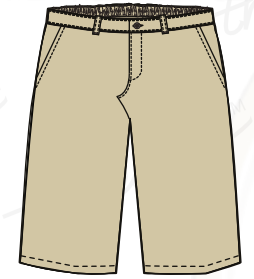
This will help us to assist you in a more efficient and timely manner. We value your relationship and wish your child a successful year ahead.

Thanking You,  
Team

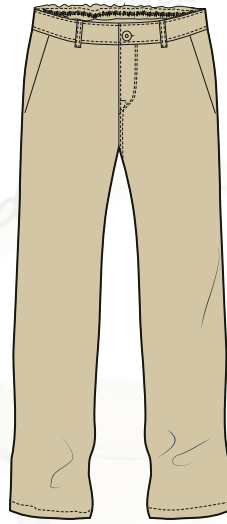
 threads™

### Boys

#### White Polo Shirt



**Boys Shorts  
(Knee Length)**

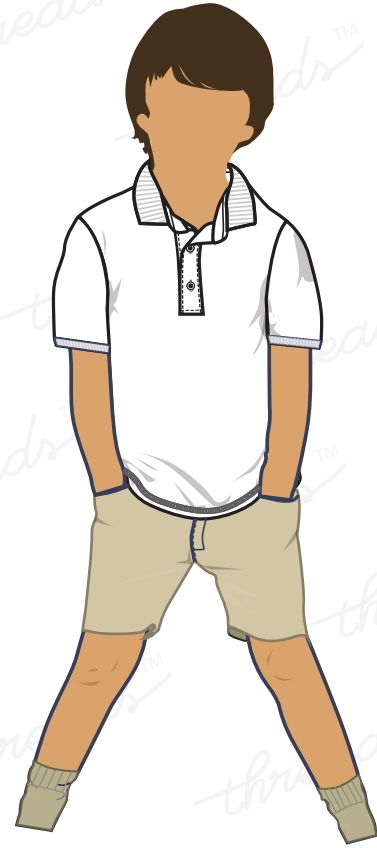


**Boys Trouser**

#### Black Baseball Cap



#### Stone Socks

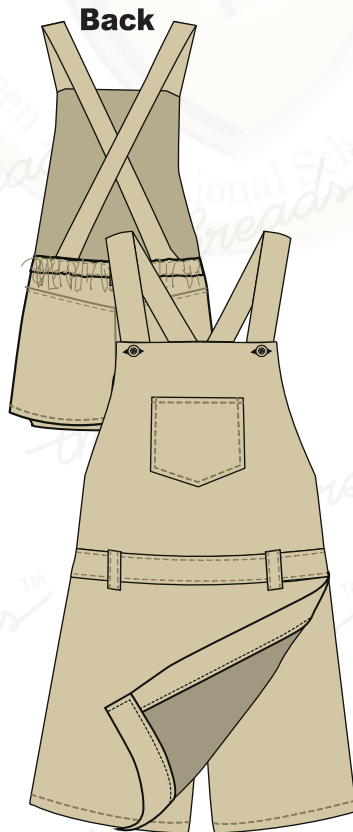


### Girls

#### White Polo Shirt



**Skorts**

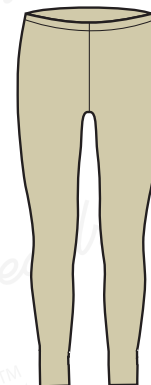


**Dangri Optional Item**

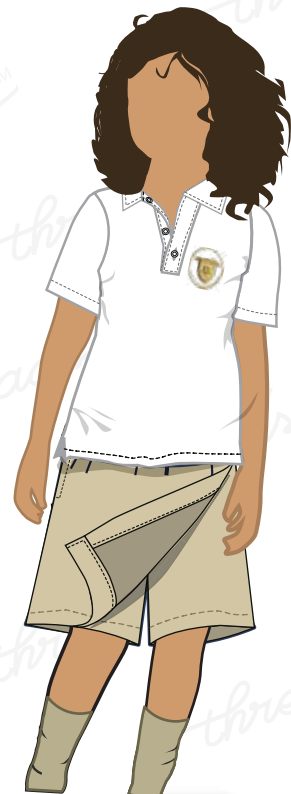
#### Stone Socks



#### Baseball Cap

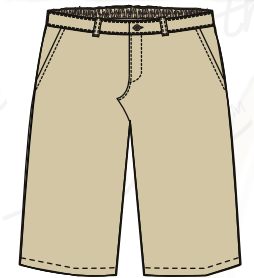


**Stone Leggings**

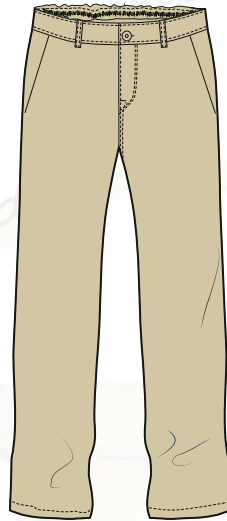


### Boys

#### White Polo Shirt



**Boys Shorts  
(Knee Length)**

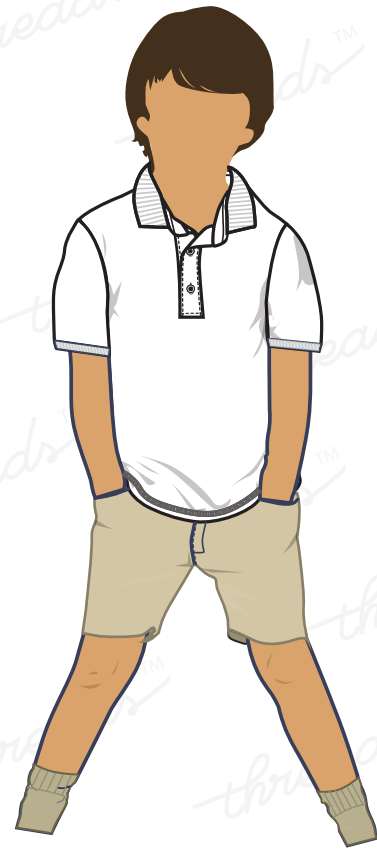


**Boys Trouser**

#### Black Baseball Cap



#### Stone Socks



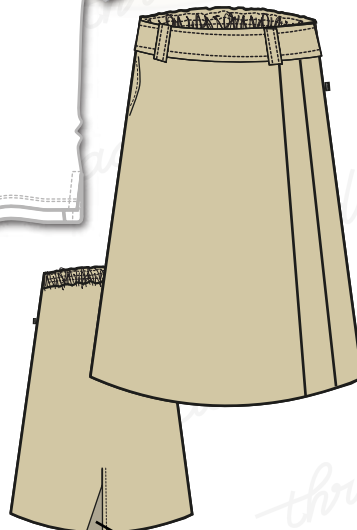
### Girls

#### White Polo Shirt

Unisex Trouser will be offered for Winterwear



**Pinafore**



Back Slit

**Long Skirt  
Optional Item**

#### Stone Socks



#### Baseball Cap

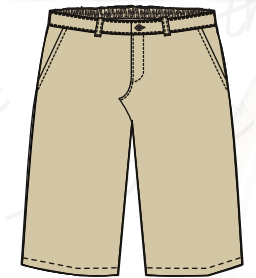


#### Stone Leggings

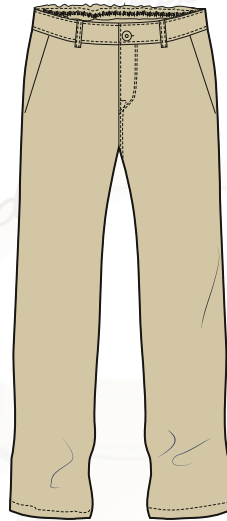


### Boys

#### White Polo Shirt



**Boys Shorts  
(Knee Length)**

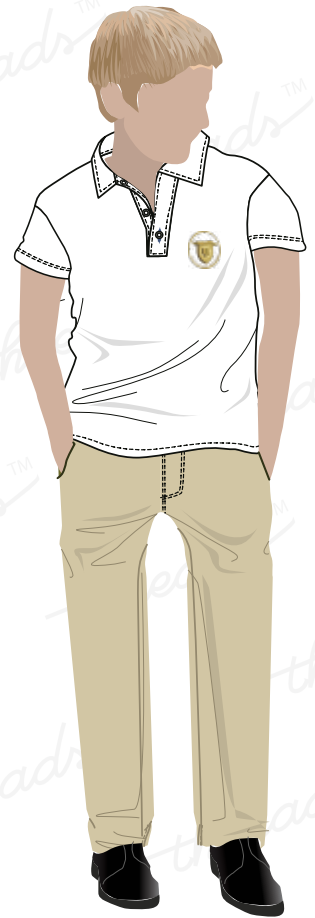


**Boys Trouser**

#### Black Baseball Cap



#### Stone Socks

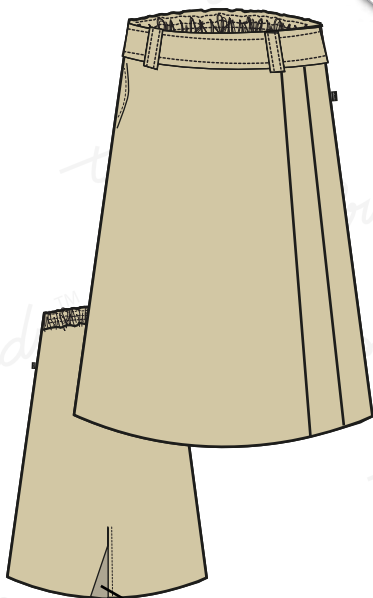


### Girls

#### White Polo Shirt

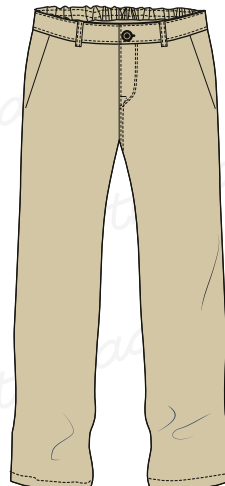


#### Baseball Cap

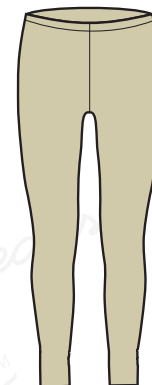


▶ **Back Slit**

#### Stone Socks



**Unisex Trouser  
Optional Item**



**Stone Leggings**



# Unisex PE Uniform

## ALL GRADES



**Polo Shirt-Green**



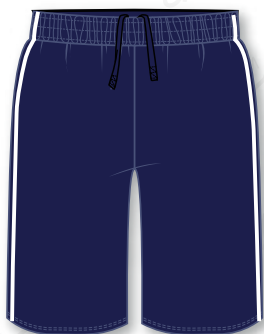
**Polo Shirt-Red**



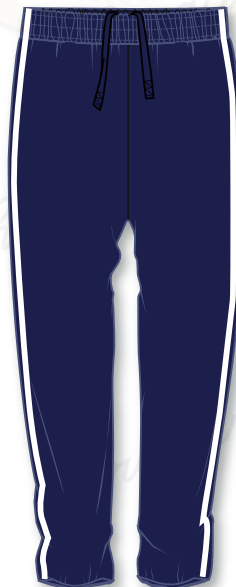
**Polo Shirt- White**



**Polo Shirt- Black**



**PE Shorts Navy**



**PE Track Pant  
Navy**



**White Socks**

**Winter Hoodie - Brown**



**Sports Hoodie - Navy**





The following guidelines will help you gain longevity from your garment.

## WASH CARE SYMBOLS



SKIRTS/  
TROUSERS/  
PINAFORE/  
SHORTS

Wash at 40°C.  
Higher temperatures will cause shrinkage, affect the colour or weaken the fibres.  
Wash dark colours separately.  
Avoid strong fabric conditioners as they can break the fibres.

Do not bleach.  
Do not tumble dry pleated garments as the pleats will disappear.  
For best results simply drip dry after washing.

Warm iron if needed (150°C maximum).  
If you want to improve the creases, use a steam iron or a clean damp cloth, with a regular iron.  
Do not iron on top of Print or Embroidery directly, please iron on reverse side.  
Never use a hot iron directly on the garment.

## WASH CARE SYMBOLS



SPORTS SHORTS/  
TRACK PANTS/  
PE POLO SHIRTS

Wash at 40°C.  
Higher temperatures will cause shrinkage, affect the colour or weaken the fibres.  
Wash dark colours separately.  
Remove promptly.  
Avoid strong fabric conditioners.

Do not bleach.  
These products will dry very quickly, if left to dry naturally, but if you want to do tumble dry, please do it in cool / lowsetting & remove promptly.  
Drip dry after washing.

Ironing is not necessary for these products. However if you still want to iron, use a cool iron setting (110°C maximum).  
Do not iron directly on the garment, place a clean damp cloth between the garment and the iron.  
Do not iron with excessive heat as this makes the fabric brittle. Do not iron on top of print or Embroidery directly, please iron on reverse side.

## WASH CARE SYMBOLS



SHIRTS - BLOUSES  
65% Polyester,  
35% Cotton weave

Can be machine washed on a Gentle / polyester / easy care / delicate setting, with upto 40°C.  
Avoid strong fabric conditioners.  
Wash dark colours separately.

Do not bleach.  
These garments can be tumble dried on a cool/lowsetting.  
If the temperature is higher the fibres can be damaged and shrinkage may occur.

With these garments ironing is not always necessary, if it is hanged during drying after washing.  
However if you still want to do ironing, change the setting to synthetic/cool iron (110°C maximum) and do iron.  
Ironing will be easier if the garment is slightly damp.  
Do not iron on top of print or Embroidery directly, please iron on reverse side.

## WASH CARE SYMBOLS



Knitted fabrics 100% acrylic; combinations of : wool/nylon, wool/acrylic, wool/polyester (jumpers, cardigans, scarves & hats); cotton/acrylic; cotton/polyester; cotton/nylon

Turn the garment inside out before washing, to reduce the loose fibres adhering to the outer surface of other garments.  
Use Cool 30°C washing with gentle / delicate / wool setting, with a short spin.  
Always wash the garment separately, or with similar colour garments. Use only mild detergent if required.  
Some fabric conditioners may harm the garment fibres thereby increasing pilling

Do not bleach.  
Do not tumble dry, the fabric can be damaged and the neck, welt and cuffs can lose their elasticity.  
Always dry FLAT and Dry in the shade (direct sunlight will harm the garment).

NEVER iron on the face fabric of the garment, as it will change the appearance of the garment and cause shine.  
Always iron the inside of the garment.

## SHOE CARE - BLACK

Simply remove excess dirt with a cloth and / or a brush and apply the cream shoe polish never liquid shine evenly to your shoes.  
Make it a point to polish your shoes once in 2 days to restore the appearance of your shoes.  
Store your shoes using a shoe tree, this will help the shoe retain its shape.  
If you don't have a shoe tree, stuff the toe cap with newspaper or tissue.  
Never store shoes near direct heat.

\* KINDLY NOTE THAT ANY PRINTS / LOGOS / EMBELLISHMENTS MUST NOT BE IRONED ON DIRECTLY BUT INSTEAD ON THE REVERSE.

## Shopping & Customer care

Please visit our website [www.threadsme.com](http://www.threadsme.com) for updated information on our operational timings. You can also see our notice board to get the updated information about uniform availability.

Shop online You can now shop online at [www.threadsme.com](http://www.threadsme.com) Subject to availability your order will be dispatched within 8 - 10 working days to your registered / requested location. Once your order has been dispatched you will be notified of the tracking number and you can track your order online.

Made to measure (custom-made uniforms) option is also available if your preferred size is not in stock. The standard delivery time is 15 days during the off peak seasons and will extend up to 30 days during the peak seasons. To request a made to measure form or require any assistance on made to measure kindly send an email to [support@threadsme.com](mailto:support@threadsme.com), alternatively you can request an online appointment at [www.threadsme.com](http://www.threadsme.com)

At Threads we take our commitment to customer service very seriously. Customer concerns and queries can be registered at [support@threadsme.com](mailto:support@threadsme.com) or through our toll free number (800-THREADS) A customer services representative will respond to your query within 24 working hours.

## *Iron on Name Labels*

Iron on name labels are used to identify the clothes of your children. Our Iron on name labels are perfect for labelling virtually any type of clothing garment. The Iron on labels are suitable for any fabric which can be ironed. Iron on labels take seconds to apply and are guaranteed not to peel off or fade in a hurry. Please make sure you follow the below instructions.

- Remove a label from the clear backing material
- Set your iron to the hottest setting. NO STEAM...!
- Wait until the iron gets hot
- Place label on garment in desired position
- Cover label with a thin white clear A4 paper
- FIRMLY press heated iron on A4 paper for 15 seconds
- Verify your application time and iron temperature
- Apply labels to CLEAN, thoroughly dry garments only. Labels applied to soiled or damp garments will not adhere properly
- Allow garment and label to cool to room temperature. Then try to peel the label off with your fingernail. If you can peel it off, your iron is not hot enough. Use another iron or reapply it for 15-20 seconds

*Jennifer*

